



ELEVATE

CHICAGO DANCE 2022

OCTOBER 13-16

RETURN TO ELEVATE  
HOMEPAGE

FOR ELEVATE at Pivotal Arts Festival 2022, Edge Theater. Photo by William Frederick

ELEVATE

# Maps and Directions



Thursday, October 13,

**Chicago Cultural Center 10:00 AM**

**The Dance Center of Columbia College Chicago 7:30 PM**

Friday, October 14

**The Dance Center of Columbia College Chicago 7:30 PM**

**Segundo Ruiz Belvis Cultural Center 7:00 PM**

Saturday, October 15

**Palmisano Nature Park 11:00 AM and 3:00 PM**

**Mana Contemporary Chicago - doors open at 6:00PM**

Sunday, October 16

**Chicago Cultural Center 10:00 AM**

**Big Marsh Park 2:00 PM and 21c Museum Hotel 6:00PM**

# Chicago Cultural Center

## **78 E. Washington St.**

Detailed information available [here](#).

Chicago Cultural Center is located across the street from Millennium Park. It is bordered by Michigan Avenue to the East, Randolph Street to the North, Washington Street to the South and Garland Court to the West.

## **Public Transportation**

[CTA](#) is one of the easiest and most economical ways to the Chicago Cultural Center.

- From the elevated lines: exit at Washington/Wabash and walk east.
- From the subway: exit at Lake (Red Line) or Washington (Blue Line) and walk east.
- Served by Michigan Ave. buses 3, 4, 19, 20, 26, 60, 66, 124, 143, 147, 151, 157 and Washington St. buses 4, J14, 20, 56, 66, 147.

## **Metra**

Metra's Millennium Park Station is beside the Cultural Center with direct access.

## **Parking**

Nearby parking garages are located at Grant Park North Garage (25 N. Michigan Ave.), Grant Park South Garage (325 S. Michigan Ave.) and [Millennium Park Garage & Millennium Lakeside Garage](#) (5 S. Columbus Dr.). Pay in person at each garage location or pre-pay online for discounted parking. Visit [www.millenniumgarages.com/rates](http://www.millenniumgarages.com/rates) or call 312.616.0600 for 24/7 customer service.



# Chicago Cultural Center, cont.

## 78 E. Washington St.

Detailed information available [here](#).

### **Biking**

Bike parking is available on the perimeter of Grant and Millennium Parks, close by to the Chicago Cultural Center.

There is a Divvy Bike station located on the Michigan Avenue side of the building.

### **Mobility Access**

The wheelchair accessible entrance, located street level at Garland Court and Randolph Street, leads to the westernmost Randolph Square entry doors which have power assisted opening. An elevator connected to the underground Pedway is located in the Randolph St Lobby. An elevator located outside the building on the southwest corner of Michigan Ave and Randolph St also connects to the underground Pedway providing access to the Cultural Center, Metra Station and Grant Park Underground Garage.



# The Dance Center of Columbia College Chicago

**1306 S Michigan Ave, Chicago, IL 60605**

Detailed information available [here](#).

The Dance Center is located in the South Loop, one block south of the intersection of Roosevelt and Michigan Ave. Note that there is CHICAGO BEARS GAME nearby at Soldiers Field at 7:15pm on October 13 that may affect traffic/parking.

## **Public Transportation**

The Roosevelt train stop (Red, Orange and Green lines) is three blocks west, and many CTA buses service the area.

## **Parking**

There are several parking options around the Dance Center, but it is recommended to allow time to secure parking.

**JAD Parking** | 1408 S Wabash Ave, Chicago, IL 60605  
Nights & Weekends, 6pm to 2am: \$8, cash only (Prices are much higher if there is a pro sporting event that night.)

**SpotHero**: This service allows you to reserve a spot online in advance, and has several locations close to the Dance Center. New to SpotHero? Download the app and use code COLUMEDU for 10 percent savings on your first park.

**Park Chicago**: 8am-10pm, credit card or cash  
South of Roosevelt | 1hr = \$2, Maximum 3 hours  
North of Roosevelt | 1hr = \$4, Maximum 3 hours

**Street Parking**: Park on the west side of Michigan Ave between 13th & 14th Streets, or on the west side of Wabash Ave at 14th St. Street parking is metered and limited. There is some limited free parking on Michigan, Wabash, and State St (State St from 16th to Roosevelt and 13th to 14th on Michigan). Pay attention to signs posted related to events, street cleaning, and restricted hours.



# The Dance Center of Columbia College Chicago, cont.

**1306 S Michigan Ave, Chicago, IL 60605**

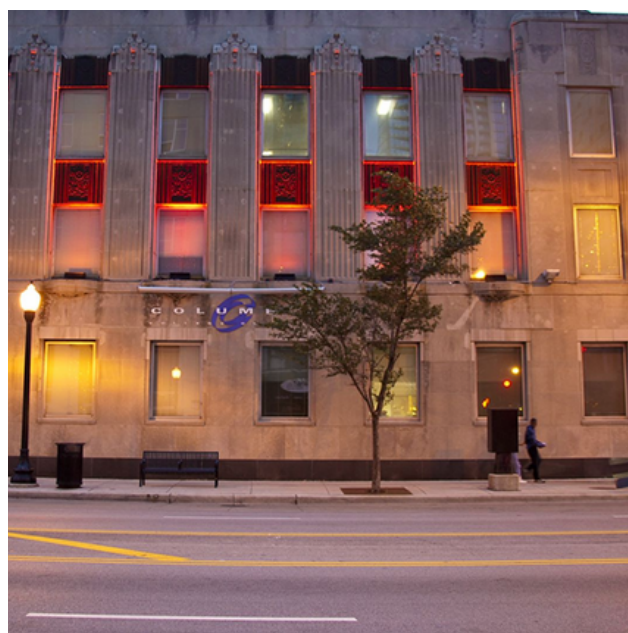
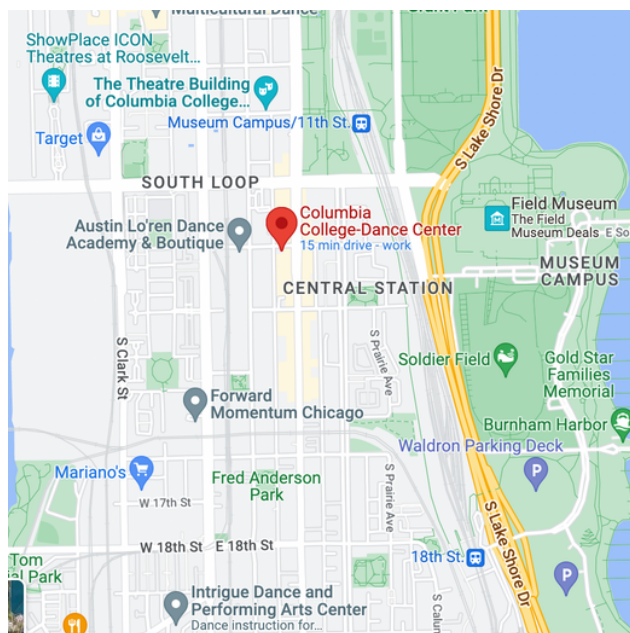
Detailed information available [here](#).

## **Biking**

There are [Divvy](#) Bike stations located on Wabash Ave / Roosevelt Rd and Michigan Ave / 14th St.

## **Mobility Access**

The Dance Center's theater, studios and public spaces are fully accessible. This includes access ramps to our entry, wheelchair-accessible space throughout the lobby, box office, restrooms and theater house, wheelchair-accessible fountains, and designated space for wheelchair access in the seating area of the theater. There are 6 wheelchair accessible seats, front and center.



# Segundo Ruiz Belvis Cultural Center (SRBCC)

**4048 W Armitage Ave, Chicago, IL 60639**

Segundo Ruiz Belvis Cultural Center is located in the Hermosa neighborhood on the northwest side of the city. From Logan Square to the east, Avondale and Irving Park to the North/Northeast, Belmont-Craigin to the west and Humboldt Park to the south give the Hermosa neighborhood a centrally-located feel of both city and community.

## **Public Transportation**

SRBCC is served by the following buses #53 Pulaski (+ 3min walk/roll), #72 North Ave (+ 11min walk/roll), #73 Armitage (+ 3min walk/roll), and #74 Fullerton (+ 10min walk/roll).

## **Metra**

Two Metra stations are reasonably close to SRBCC.

- Healey Station (Pulaski + Fullerton) - NW
- Grand/Cicero Station - W

## **Parking**

There are limited metered parking options around SRBCC, so it is recommended to carpool and allow time to secure parking.



# Segundo Ruiz Belvis Cultural Center (SRBCC), cont.

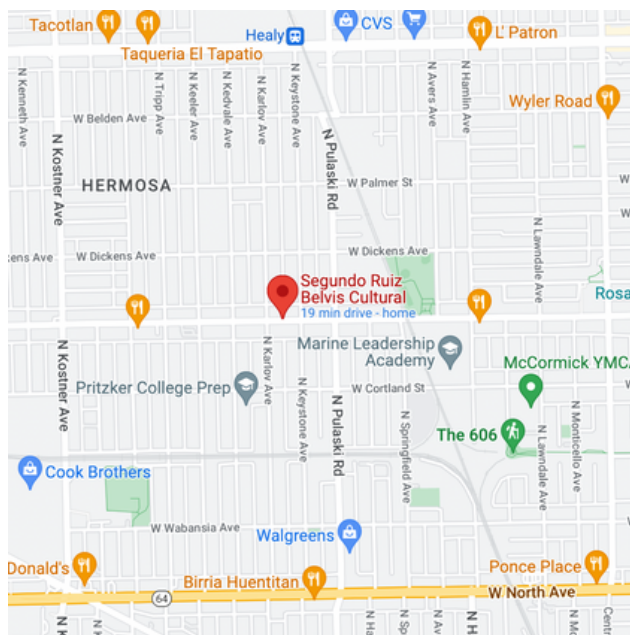
**4048 W Armitage Ave, Chicago, IL 60639**

## **Biking**

SRBCC is a short ride from the west end of The 606 trail. There is a Divvy Bike Station nearby at Healey Metra Station (Pulaski + Fullerton). There are often Divvy Bikes available for rental throughout the neighborhood. Check the app/site for details.

## **Mobility Access**

Restrooms and main space are wheelchair accessible.



# Palmisano Nature Park

**2850 S Halsted St, Chicago, IL 60608**

Detailed information available [here](#).

Palmisano Park, formerly known as Stearns Quarry, is a 26.60-acre site on Chicago's southwest side in the heart of the Bridgeport community. Its story is one of transformation, as it has changed from coral reefs to quarry to landfill to park. Not surprisingly, each incarnation played a major role in developing the next. Take the Palmisano Park [Audio Tour](#).

This is a dynamic park, with a fishing pond, interpretive wetlands, preserved quarry walls, trails, an athletic field, a running track, and a hill that offers dramatic views. Over 1.7 miles of paths, including recycled timber boardwalks, concrete walks, a crushed stone running path, and metal grating walkways traverse the park. These trails allow for a variety of experiences along the quarry wall, across the terracing wetlands, and down to the pond. Scenic overlooks provide dramatic overviews of the pond and wetlands, and spectacular city views can be seen from the mound.

## **Public Transportation**

Palmisano is served by the following buses #8 Halsted (27th St. or 29th St.), #31 (31st St. & Halstead), #44 Wallace/Racine (Wallace & 29th St. + a 9min walk/roll), #62 Archer (Halsted Orange Line Sta. + a 7min walk/roll).

Palmisano is a 7min walk/roll from the CTA Orange Line - Halsted Station.

## **Parking**

There is free parking all along west 29th St, which is between Palmisano and McGuane Park.





# Palmisano Nature Park, cont.

**2850 S Halsted St, Chicago, IL 60608**

Detailed information available [here](#).

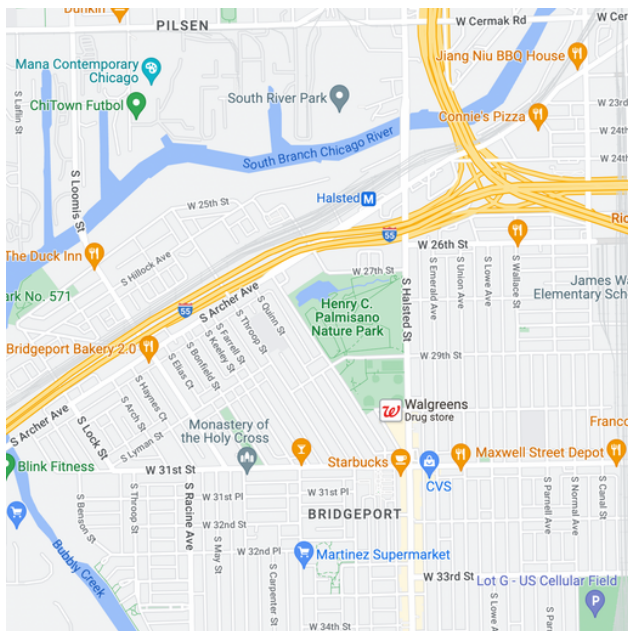
## Biking

There is a Divvy Bike Station nearby at Emerald Ave / 28th St.

## Mobility Access

Natural environment with paved pathways making most performance spaces wheelchair accessible. Fieldhouse at McGuane Park, 2901 S Poplar Ave (with all-gender restrooms) is wheelchair accessible.

\* In case of rain or inclement weather, please check for updates on Chicago Dancemakers Forum's Instagram page.



# Mana Contemporary Chicago

**2233 S Throop St, Chicago, IL 60608**

Mana Contemporary Chicago is located in the Pilsen neighborhood on the The red-brick former Commonwealth Edison warehouse and tower is now home to Mana Contemporary Chicago. This rapidly expanding art center contains exhibition spaces, classrooms, a central cafe, a library, dozens of artist studios and more.

## **Entrance**

Look for the large shipping containers with MANA written on them and then head toward the large parking lot.

## **Public Transportation**

Public Transportation to/from Mana Contemporary Chicago is very limited. Please consider other options.

## **Parking**

Mana Contemporary has a large free parking lot which includes reserved access parking spaces.

## **Biking**

There is a Divvy Bike Station and bike rack nearby at Dvorak (Anton) Park Fieldhouse (1119 W Cullerton St).



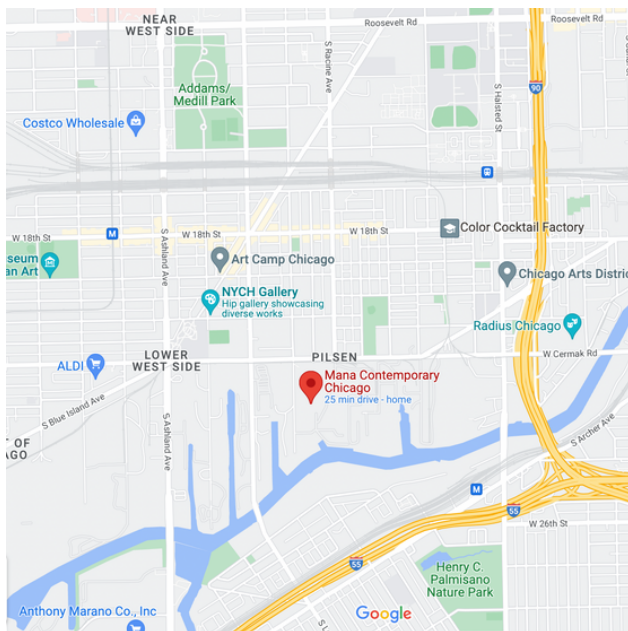
# Mana Contemporary Chicago, cont.

**2233 S Throop St, Chicago, IL 60608**

## **Mobility Access**

Mana Contemporary has a large free parking lot which includes reserved access parking spaces. The public lobby entrance is located on the east side of the building (facing 2233 S Allport) and staffed 24 hrs/day. The accessible entry door to the building is located on the S Throop side, next to additional reserved access parking spaces and using a double-wide entry ramp to a door operated by the lobby staff, who is reachable via the door intercom.

The building has accessible hallways, water fountains, studio and bathroom entryways on every floor, which is reachable 24/7 by staff-operated elevators.



# Big Marsh Park

**11559 S Stony Island Ave, Chicago, IL 60633**

Detailed information available [here](#).

Big Marsh is in Chicago just off the eastern banks of Lake Calumet. The park is accessible from 103rd St and Doty Rd or 122nd St and Torrence Ave.

This 300 acre natural area became a park in 2016 and is being remediated and restored to a native habitat, which is quickly becoming a premier eco-recreation site. Big Marsh features nature trails and a bike park that attracts adventure seekers of all sorts. The marsh is also home to a wide variety of the Calumet Region's native flora and fauna, and provides refuge to a variety of migratory and resident birds. Visitors can learn more about the Southeast Side's rich cultural and natural history by paying a visit to the new Ford Calumet Environmental Center (FCEC) onsite.

## **FREE Shuttles**

Free Shuttles will be provided for the festival.

1:00pm from either

The Harris Theater (205 E Randolph St)

or 95th St/Dan Ryan Red Line Station (14 W 95th)

No registration necessary. Just show up! There will be plenty on room on the FREE (wheelchair accessible) shuttle buses.

## **Parking**

Paid parking is available in the south entrance main lot with access to the bike park and Ford Calumet Environmental Center. Limited, unpaid parking is available off of S. Stony Island Avenue on the north end of the park with access to hiking trails and views across the marsh to the bike park.



# Big Marsh Park, cont.

**11559 S Stony Island Ave, Chicago, IL 60633**

Detailed information available [here](#).

## **Biking**

Attendees are encouraged to bring their bikes to enjoy the multiple, professionally-designed bike courses at Big Marsh. There is also a Divvy Bike Station onsite.

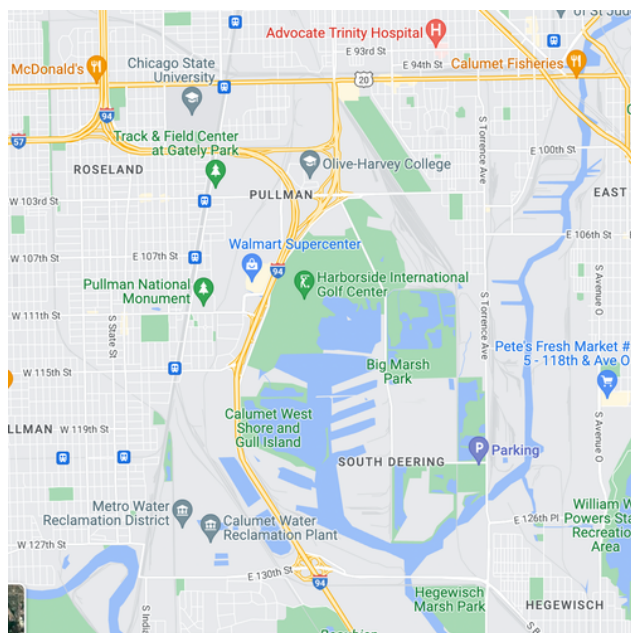
## **Public Transportation**

Public Transportation to/from Big Marsh Park is very limited. Please consider other options.

## **Mobility Access**

Big Marsh Park is an outdoor, natural environment with limited accessibility. There are paved pathways to increase accessibility. The new Ford Calumet Environmental Center (FCEC) onsite is wheelchair accessible, including restrooms.

**\* In case of rain or inclement weather, please check for updates on Chicago Dancemakers Forum's Instagram page.**



# 21c Museum Hotel Chicago

## **55 E Ontario St, Chicago, IL 60611**

Located just steps from the famous Magnificent Mile district in River North Chicago, contemporary art surrounds and inspires you at 21c Museum Hotel Chicago. Discover a new kind of cultural and travel experience in the Windy City with this multi-venue museum and 297 room boutique hotel featuring 106 suites. 21c welcomes both visitors and the local community to enjoy the curated exhibitions, cultural programming, and culinary offerings at Lure Fishbar.

Virtual Tour is available [here](#).

### **Public Transportation**

CTA is one of the easiest and most economical ways to 21c Museum Hotel. The Red Line - Grand Station is a 4min walk/roll away. The Brown Line - Chicago Station is a 6min walk/roll away. Michigan Ave buses run two blocks east.

### **Parking**

Paid parking is available in nearby lots, including Rush -Ohio-Wabash [ROW Parking Garage](#) (50 E Ohio St, Chicago,IL,60611).



# 21c Museum Hotel, cont.

**55 E Ontario St, Chicago, IL 60611**

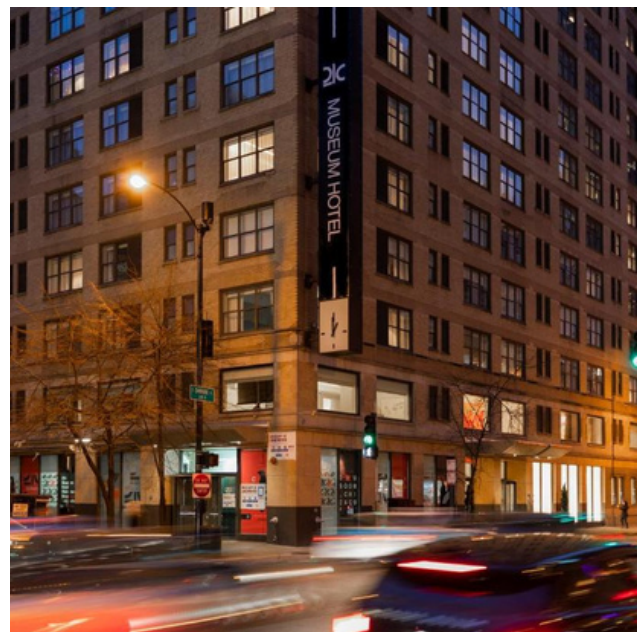
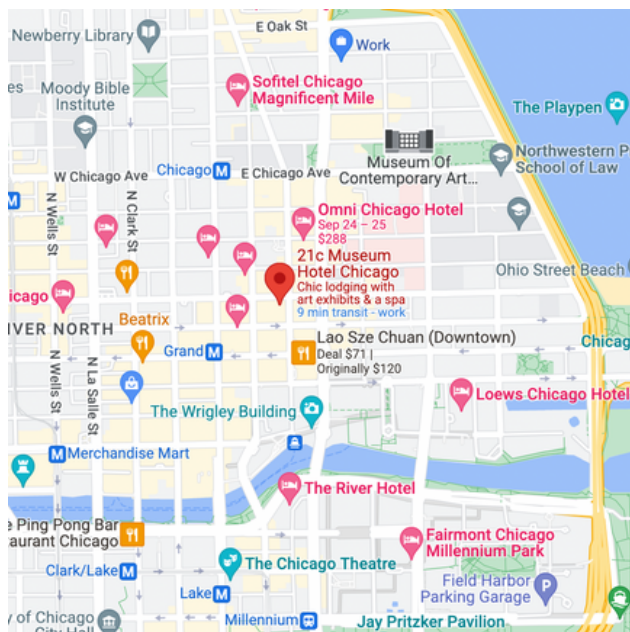
Detailed information available [here](#).

## **Biking**

There are a number of [Divvy](#) Bike Stations and Divvy Bikes available for rental in the surrounding downtown area.

## **Mobility Access**

21c Museum Hotel Chicago is wheelchair accessible via elevator access.



[RETURN TO ELEVATE  
HOMEPAGE](#)