

ELEVATE

CHICAGO DANCE 2022

OCTOBER 13-16

RETURN TO ELEVATE  
HOMEPAGE

ELEVATE

Photo: El at Pivotal Arts Festival 2022, Edge Theater. Photo by William Frederick

# Festival Accessibility

504 Coordinator and Accessibility Contact:

Shawn at 312-550-9172 or [info@chicagodancemakers.org](mailto:info@chicagodancemakers.org)

Scroll through the following pages for details on venue mobility access and event accessibility services.



# Services Offered



## ASL Interpretation

Thursday, October 13 at Chicago Cultural Center

- 4:30pm "Queering Career: a Conversation with Queer Dancemakers"

Sunday, October 16 at 21c Museum Hotel

- 6:00pm Festival Closing Party and Celebration of the 2023 Lab Artists



## Audio Description

Thursday, October 13, 7:30pm performance at The Dance Center of Columbia College Chicago



## Live Captioning

Friday, October 14, 12:00pm on Zoom  
"Meet the Dancemakers"



## Open Captioning

Sunday, October 16 Film Screenings at Chicago Cultural Center and on Twitch 10:00AM - 1:00PM



## Quiet Spaces

Available in most indoor venues.

**TO REQUEST A SERVICE OR TIMING NOT LISTED,**  
please contact Shawn at 312-550-9172 or  
[info@chicagodancemakers.org](mailto:info@chicagodancemakers.org).



# Chicago Cultural Center

## 78 E. Washington St.

Detailed information available [here](#).

### **Mobility Access**

The wheelchair accessible entrance, located street level at Garland Court and Randolph Street, leads to the westernmost Randolph Square entry doors which have power assisted opening. An elevator connected to the underground Pedway is located in the Randolph St Lobby. An elevator located outside the building on the southwest corner of Michigan Ave and Randolph St also connects to the underground Pedway providing access to the Cultural Center, Metra Station and Grant Park Underground Garage.

Note that restrooms are gendered.





# The Dance Center of Columbia College Chicago

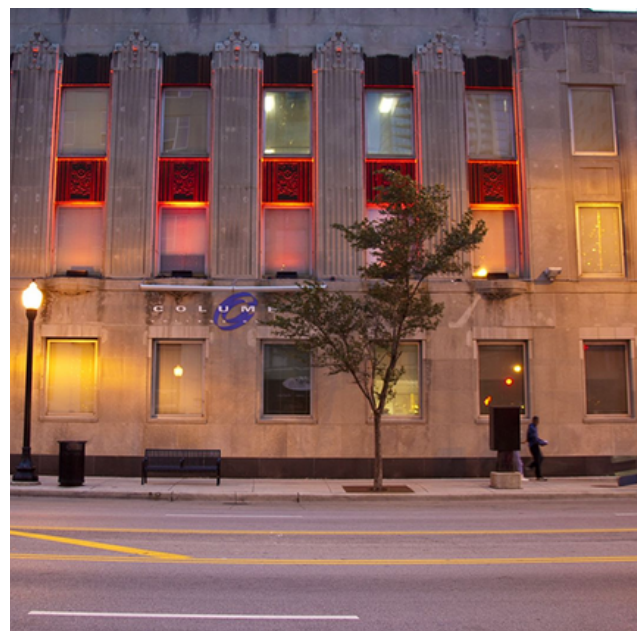
**1306 S Michigan Ave, Chicago, IL 60605**

Detailed information available [here](#).

## Mobility Access

The Dance Center's theater, studios and public spaces are fully accessible. This includes access ramps to our entry, wheelchair-accessible space throughout the lobby, box office, restrooms and theater house, wheelchair-accessible fountains, and designated space for wheelchair access in the seating area of the theater. There are 6 wheelchair accessible seats, front and center.

All-Genders restrooms.



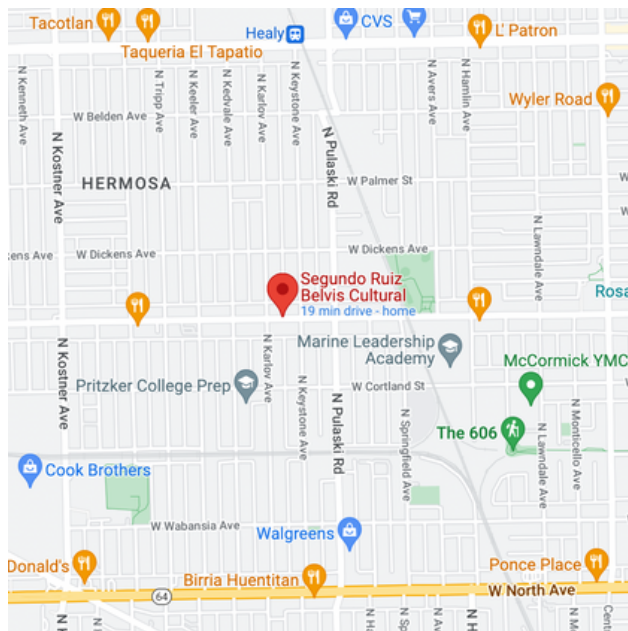
# Segundo Ruiz Belvis Cultural Center (SRBCC)

4048 W Armitage Ave, Chicago, IL 60639

## Mobility Access

Restrooms and main space are wheelchair accessible.

All-Genders Restrooms.



# Palmisano Nature Park

**2700 S Halsted St, Chicago, IL 60608**

Detailed information available [here](#).

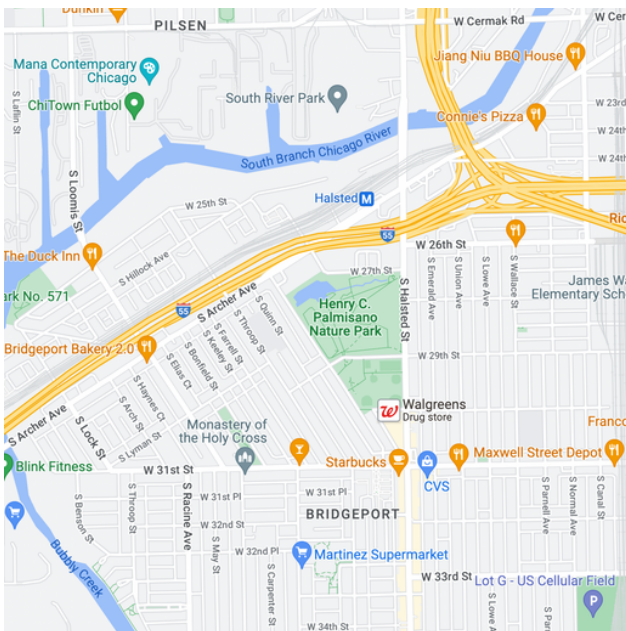
## Mobility Access

Natural environment with paved pathways making most performance spaces wheelchair accessible. Fieldhouse at McGuane Park, 2901 S Poplar Ave (with restrooms) is wheelchair accessible. Roll-up access on the corner of 29th and Poplar.

The performance travels throughout the vast park space and, at times, will be a distance from the fieldhouse. One area of the performance is NOT wheelchair accessible.

All-Gender restroom inside McGuane Park Fieldhouse.

\* In case of rain or inclement weather, please check for updates on Chicago Dancemakers Forum's Instagram page.



# Mana Contemporary Chicago

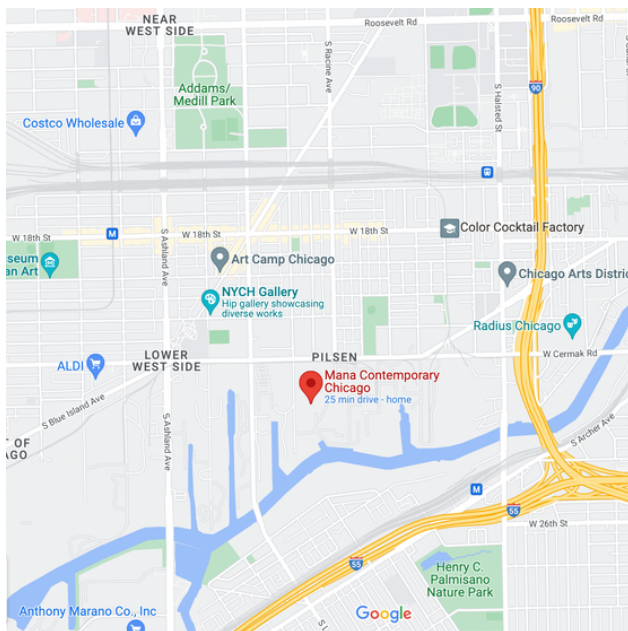
**2233 S Throop St, Chicago, IL 60608**

## **Mobility Access**

Mana Contemporary has a large free parking lot which includes reserved access parking spaces. The public lobby entrance is located on the east side of the building (facing 2233 S Allport) and staffed 24 hrs/day. The accessible entry door to the building is located on the S Throop side, next to additional reserved access parking spaces and using a double-wide entry ramp to a door operated by the lobby staff, who is reachable via the door intercom.

The building has accessible hallways, water fountains, studio and bathroom entryways on every floor, which is reachable 24/7 by staff-operated elevators.

All-Genders Restrooms.





# Big Marsh Park

**11559 S Stony Is Ave, Chicago, IL 60633**

Detailed information available [here](#).

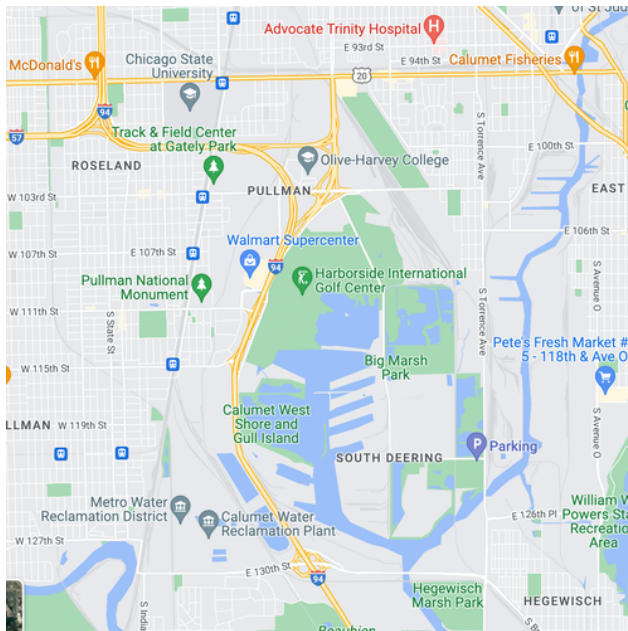
## Mobility Access

Big Marsh Park is an outdoor, natural environment with limited accessibility. There are paved pathways to increase accessibility. The new Ford Calumet Environmental Center (FCEC) onsite is wheelchair accessible, including restrooms.

Some of the performances travel throughout the vast park space and, at times, could be a distance from the FCEC.

All-Genders Restrooms.

\* In case of rain or inclement weather, please check for updates on Chicago Dancemakers Forum's Instagram page.





# 21c Museum Hotel

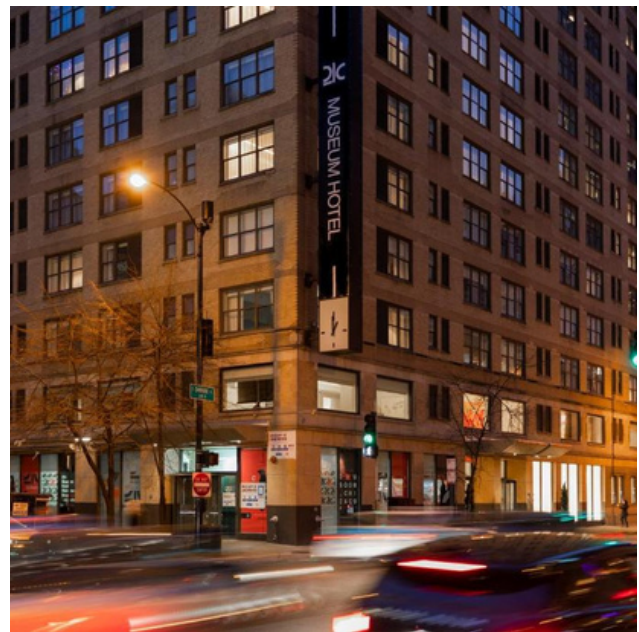
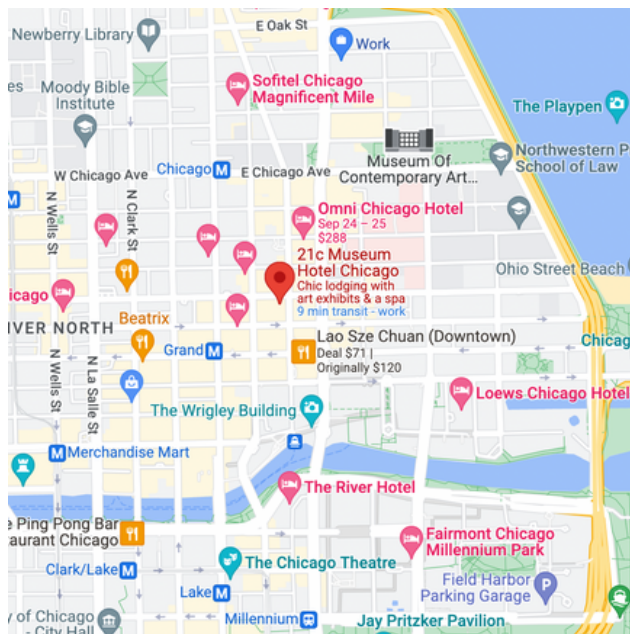
**55 E Ontario St, Chicago, IL 60611**

Detailed information available [here](#).

## **Mobility Access**

21c Museum Hotel Chicago is wheelchair accessible via elevator access.

All-Genders Restrooms.



[RETURN TO ELEVATE  
HOMEPAGE](#)